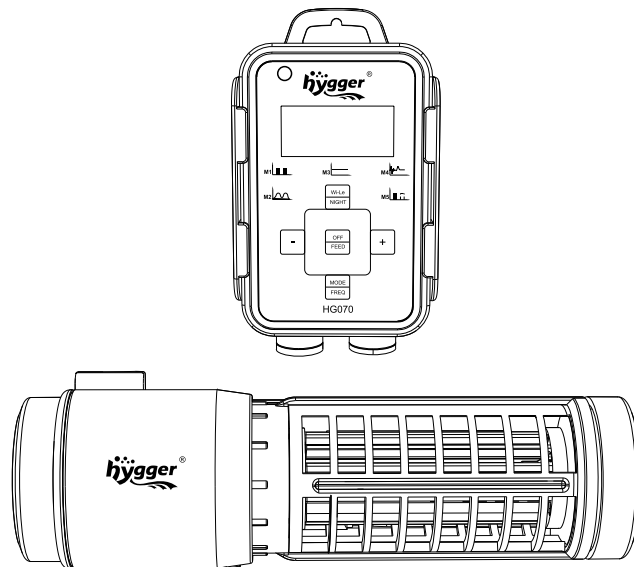


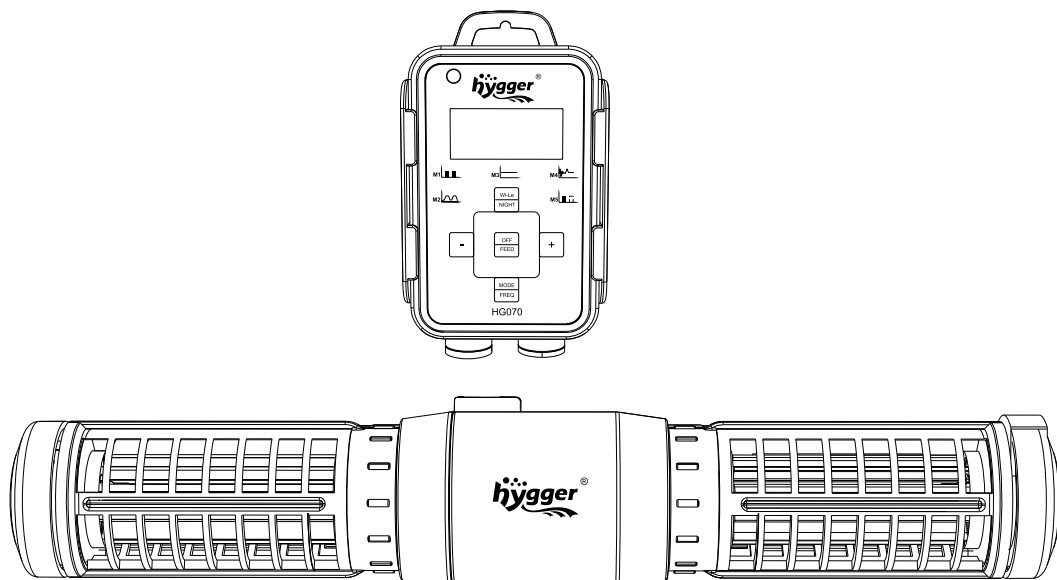


# HG070 USER MANUAL

## hygger cross-flow wave pump



**HG070-12W**

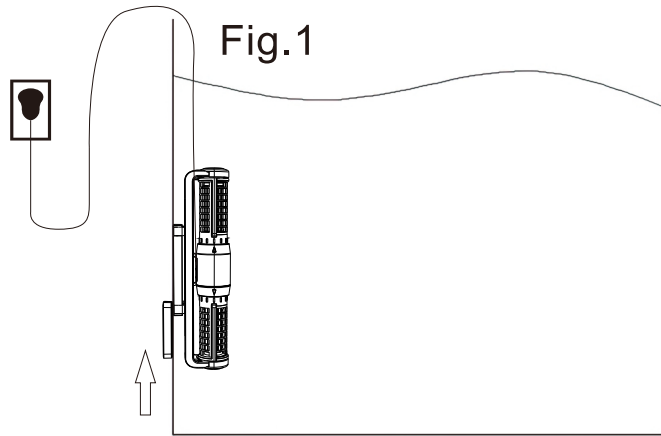


**HG070-18W/HG070-25W**



## WARNING:

- 1.To ensure optimal performance, avoid allowing the pump to operate without water.
- 2.Keep the controller in a dry place and prevent it from being exposed to water splashes.
- 3.Exercise caution when assembling the magnet base. Place it parallel to the pad close to the outside wall of the fish tank to avoid damaging the fish tank.



- 4.Do not attempt to disassemble the controller or adapter without professional guidance.

## 1. INTRODUCTION

hygger wave makers are expertly designed to stimulate a natural sea environment using advanced technology, providing a natural habitat for various aquatic organisms in the fish tank or pond. Before assembling and operating correctly, please read the manual carefully.

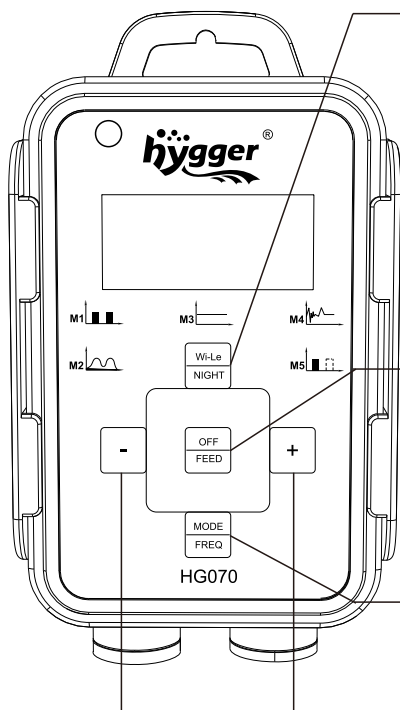
## 2. PRODUCT FEATURES

- Unique control system offers multiple functions and the ability to create various wave patterns, providing a natural environment for different sea creatures
- Built-in wireless controllers allow synchronize operation among wave makers. One main controller can remotely control the slave-controllers, providing a convenient and easy-to-use system.
- Low voltage DC electronic pump with variable frequency provides a safe operating environment for users.
- Easy operation to achieve multiple sea movements.
- Flow direction can be adjusted by different modes needed, providing maximum flexibility and customization.
- Large range of voltage input (AC100~240V 50/60Hz) allows to operate in various power system and prevents the impact on waves.

### 3. PRODUCT SPECIFICATIONS

<b>Model</b>	HG070-12W	HG070-18W	HG070-25W
<b>Voltage</b>	Input: AC100-240V 50/60Hz Output: DC24V		
<b>Flow rate (GPH)</b>	1321GPH(5000L)	1850GPH(7000L)	2380GPH(9000L)
<b>Recommend tank size</b>	≤60CM (60Gal)	≤80CM (135Gal)	≤100CM (265Gal)
<b>Recommend glass thickness</b>	≤0.315"(8MM)	≤0.39"(10MM)	≤0.47"(15MM)

### 4. CONTROLLER DIAGRAM



Wi-Le Mode: The main controller can remotely control the slave-controllers for synchronized operation.  
 NIGHT Mode: This mode automatically switches to constant flow mode with the lowest flow rate.

OFF Mode: One clip can change turn /off the pump  
 FEED Mode: Press and hold the button to enter feed mode, and the LCD display will show on Feed time from Fd 10 to Fd 0, and change to normal set after finish feed time automatic.

MODE Button: Press once to change between M1 to M5 models, and the current model will be displayed on the screen.

FREQ Model: Press and hold to set the desired frequency of the pump according to customer preferences.

“ + /-” button can adjustable under any of mode

## A. Buttons

**MODE/FREQ:** Press briefly to select each function mode, press and hold to set frequency.

**OFF/FEED:** Press to turn on and off; press and hold to enter the Feed mode.

**Wi-Le/NIGHT:** Press the button to set Master control, Slave control or operate individually; press and hold to enter the Night Mode.

**“+/-”:** Adjust any model increase or decrease.

## B. Function Description

**Master Control:** Press “Wi-Le/NIGHT” once to enter the Master Control model, the “M(Master)” icon will appear. Master controller can operate all functions.

**Slave Control:** Press “Wi-Le/NIGHT” until the “S(Slave)” icon appears to enter into Slave mode, Among two or more wave makers in a group, set one controller as the Master Control and the other as Slave Control. All pumps will keep the same performance by adjusting the Master controller.

## C. Introduction of each mode

### M1: Classic Wave Pulse Mode

One or more pumps can be used at the same time, press the “+” and “-” keys to adjust flow, long press “MODE/FREQ” to adjust the frequency.

### M2: Sine Wave Mode

One or more pumps can operate at the same time in this mode. The flow rate varies from 30% to 100% as a sine curve. Long press “MODE/FREQ” to adjust the frequency.

One or more pumps can make a constant flow at the same time. Flow rate can be adjusted by “+” and “-”.

### M3: Constant Wave Mode

One or more pumps can make a constant flow at the same time. Flow rate can be adjusted by “+” and “-” keys.

### M4: Random Wave Mode

One or more pumps can operate at the same time. Pump power changes randomly and irregularly.

### M5: Classic Wave Cross-flow Mode

One or more pumps can be used at the same time, Adjust the flow rate with the “+” and “-” keys and the frequency with a long press of “MODE/FREQ”.

## D. Feed Mode Function

Long press the “Wi-Le/FEED” button, pump stops working for 10 minutes to feed, then restarts automatically. To resume working during feeding, long press the “Wi-Le/FEED” button again, then current setting will be displayed.

## E. Night Mode

Long press the “Wi-Le/NIGHT” button to enter night mode. Press and hold again to exit Night Mode. Night Mode: automatically switches to constant flow mode with the lowest flow rate.

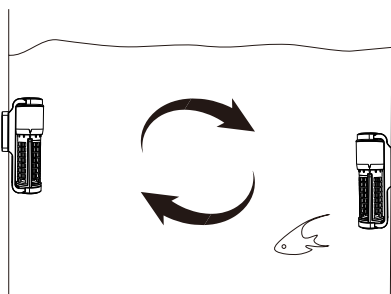
## F. Key Locking Function

Long press the “+” and “-” keys until lock icon appears in the upper right corner of the screen, to lock all function keys. To unlock, long press the “+” and “-” keys until lock icon disappears.

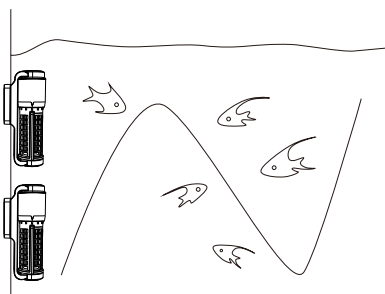
# 5. MAINTAINING

1. Clean the controller regular to ensure optimal performance.
2. If water comes into controller, wipe the surface with a dry cloth to prevent damage.
3. Remove the debris in the pump by rotating the basket counterclockwise to open and clockwise to lock.
4. Use a soft cloth to clean the blades and remove any dirt buildup in the pump.
5. This product is for indoor use only, don't submerge it in the water to avoid unnecessary loss.

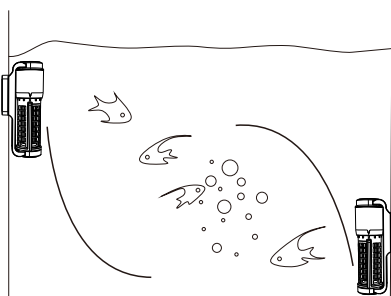
## Appendix: PUMP LOCATING



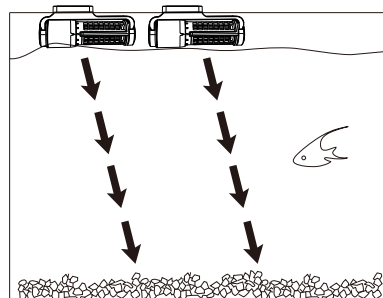
Water circulation enhancement



Beautifies and slims down fish



Increases dissolved oxygen in tank



Clears fish feces for a cleaner aquarium

## 6. Trouble Shooting

Error code	Fault	Solution
Er01	Controller over current	Abnormal work current detected, check if the pump is short of voltage or if the controller is broken.
Er02	Controller over temperature	Check whether the controller is exposed to sunlight or in a high temperature environment.
Er04	Pump blockage	The impeller stops running, clean the pump and impeller to ensure the impeller is clean and working.
Er05	Controller over voltage	Check the input supplying voltage
	Controller under voltage	

## 7. DISPOSAL

Do not dispose of this product as unsorted municipal waste. Collection of such waste separately for special treatment is necessary. This product has to be disposed of at an authorized place for the recycling of electrical and electronic appliances rather than being disposed of together with the domestic waste. Collecting and recycling waste is a way of saving natural resources. So, please consult with your local seller to make sure the product is disposed of in an environmentally friendly way.

## 8. PACKING LIST

- 1x Wave pump
- 1x DC adapter
- 1x LCD controller with holder
- 1x User manual

## 9. CONTACT INFORMATION

Company Name: Shenzhen Mago Trading Co., Ltd  
Add: Bantian Group Business Central, Longgang District, Shenzhen City,  
Guangdong Province, China  
Website: [www.hygger-online.com](http://www.hygger-online.com)  
E-mail: [Mago@hygger-online.com](mailto:Mago@hygger-online.com)

**If you have any problem, please provide your invoice and shipping address by  
E-mail: [mago@hygger-online.com](mailto:mago@hygger-online.com)**

<b>EC</b>	<b>REP</b>	E-CrossStu GmbH Mainzer Landstr.69, Frankfurt am Main, Baden-Württemberg, 60329, Germany E-CrossStu@web.de +49 69332967674
-----------	------------	----------------------------------------------------------------------------------------------------------------------------------------

<b>UK</b>	<b>REP</b>	YH Consulting Limited C/O YH Consulting Limited Office 147, Centurion House, London Road, Staines-upon-Thames, Surrey, TW18 4AX, London H2YHUK@gmail.com +44 07514-677868
-----------	------------	---------------------------------------------------------------------------------------------------------------------------------------------------------------------------------------------



MADE IN CHINA